
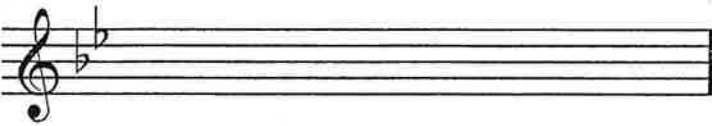
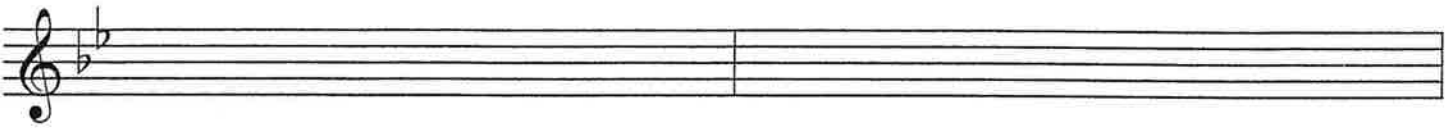


# THEORY

Music 194  
Silent Dictation I

NAME: \_\_\_\_\_ 

Bach: Little Fugue in G-minor, Fugal Subject



## DIRECTIONS:

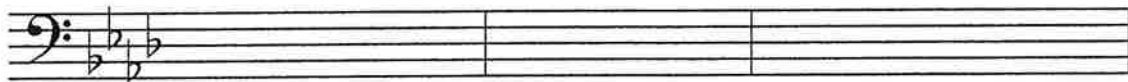
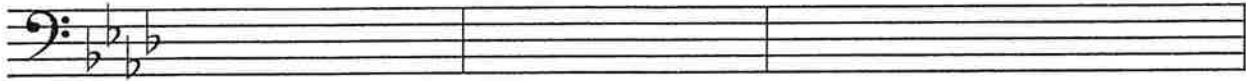
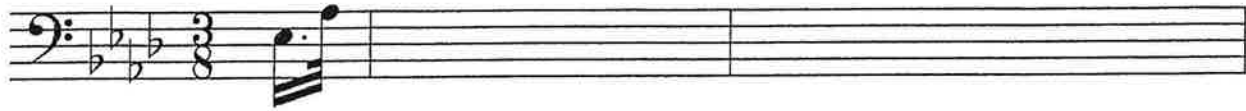
1. Complete this example to the 3rd beat of the 5th bar.
2. Attach 5 more examples of comparable length using a stapler, and mark them as above.
3. Silent Dictation is not graded, but
  - A) IF YOU HAND this assignment in before the day PACE 1 is administered, I will add a **bonus point** to your PACE 1 grade.
  - B) IF YOU HAND this assignment in anytime between 8:00 AM and 5:00 PM on the day of PACE 1, I will be grateful.
  - C) IF YOU HAND this assignment in no more than one class day late, I will accept it, but I will **deduct one point** from your PACE 1 grade.
  - D) I WILL NOT ACCEPT this assignment after the time mentioned in C) above, AND I will **deduct two points** from your PACE 1 grade.

# THEORY

Music 194  
Silent Dictation 2

NAME \_\_\_\_\_

## Beethoven Symphony #5, II



Directions:

1. Complete this example to the 1st beat of the last bar.
2. Attach 5 more examples of comparable length using a stapler, and mark them as above.
3. Silent Dictation is not graded, but...
  - A) IF YOU HAND this assignment in before the day PACE 2 is administered, **I will add a bonus point** to your PACE 2 grade.
  - B) IF YOU HAND this assignment in anytime between 8:00 AM and 5:00 PM on the day of PACE 2, I will be grateful.
  - C) IF YOU HAND this assignment in nore more than one class day late, I will accept it, but **I will deduct one point** from your PACE 2 grade.
  - D) I WILL NOT ACCEPT this assignment after the time mentioned in C) above, **AND I will deduct two points** from your PACE 2 grade.

# THEORY

NAME: \_\_\_\_\_ 

Music 194  
Silent Dictation 3

Drink To Me Only With Thine Eyes



- DIRECTIONS:
1. Complete this example through the 16th bar.
  2. Attach 5 more examples of comparable length using a stapler, and mark them as above.
  3. Silent Dictation is not graded, but...
    - A) IF YOU HAND this assignment in before the day PACE 3 is administered, **I will add a bonus point** to your PACE 3 grade.
    - B) IF YOU HAND this assignment in anytime between 8:00 AM and 5:00 PM on the day of PACE 3, I will be grateful.
    - C) IF YOU HAND this assignment in no more than one class day late, I will accept it, but **I will deduct one point** from your PACE 3 grade.
    - D) I WILL NOT ACCEPT this assignment after the time mentioned in C) above, AND **I will deduct two points** from your PACE 3 grade.

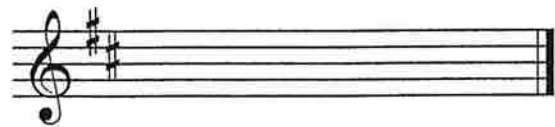
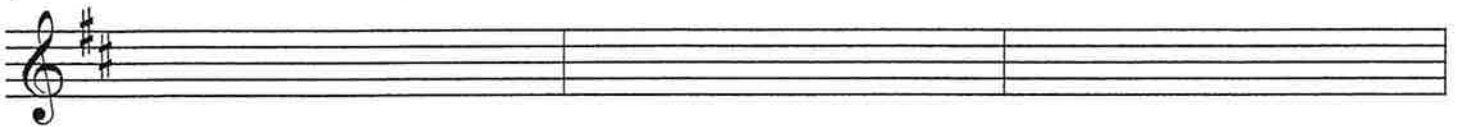
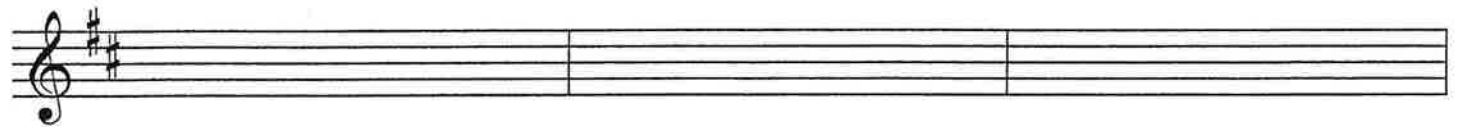
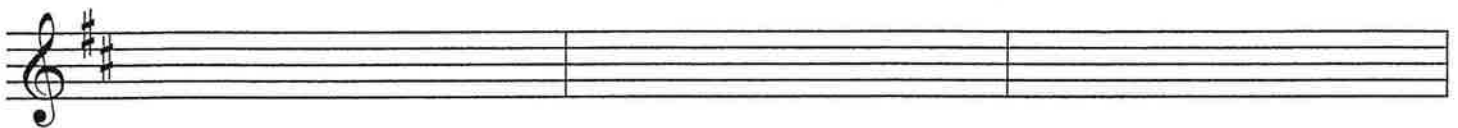
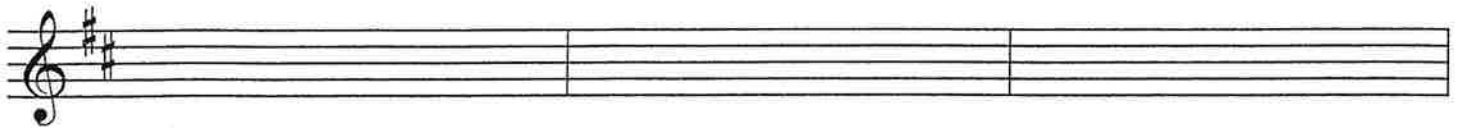
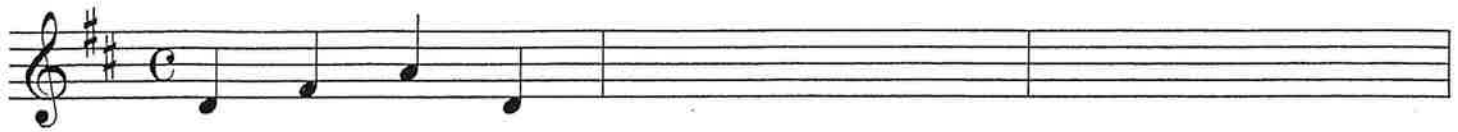
# THEORY

Music 194

Silent Dictation 4

NAME: \_\_\_\_\_

Christ The Lord Is Ris'n Today



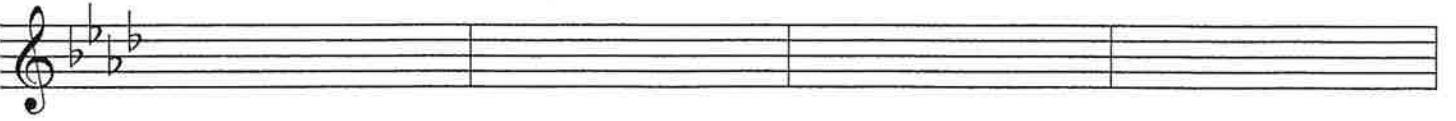
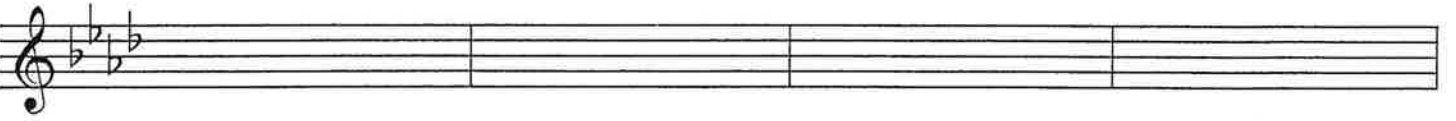
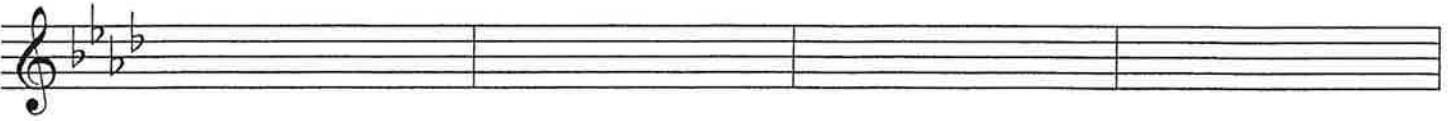
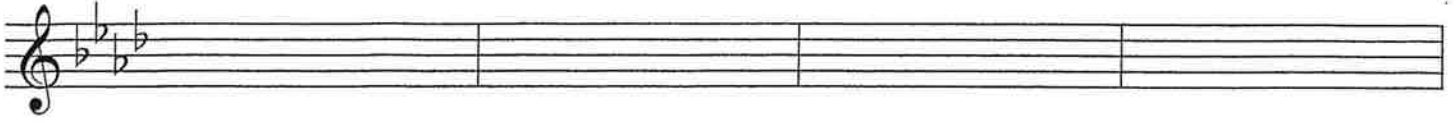
- DIRECTIONS:
1. Complete this example through the 16th bar.
  2. Attach 5 more examples of comparable length using a stapler, and mark them as above.
  3. Silent Dictation is not graded, but...
    - A) IF YOU HAND this assignment in before the day PACE 4 is administered, **I will add a bonus point** to your PACE 4 grade.
    - B) IF YOU HAND this assignment in anytime between 8:00 AM and 5:00 PM on the day of PACE 5, I will be grateful.
    - C) IF YOU HAND this assignment in no more than one class day late, I will accept it, but **I will deduct one point** from your PACE 4 grade.
    - D) I WILL NOT ACCEPT this assignment after the time mentioned in C) above, AND **I will deduct two points** from your PACE 4 grade.

# THEORY

Music 194  
Silent Dictation 5

NAME: \_\_\_\_\_

## Star Spangled Banner



### DIRECTIONS:

1. Complete this example through the 32nd bar.
2. Attach 5 more examples of comparable length using a stapler, and mark them as above.
3. Silent Dictation is not graded, but...
  - A) IF YOU HAND this assignment in before the day PACE 5 is administered, I will add a **bonus point** to your PACE 5 grade.
  - B) IF YOU HAND this assignment in anytime between 8:00 AM and 5:00 PM on the day of PACE 5, I will be grateful.
  - C) IF YOU HAND this assignment in no more than one class day late, I will accept it, but I will **deduct one point** from your PACE 5 grade.
  - D) I WILL NOT ACCEPT this assignment after the time mentioned in C) above, AND I will **deduct two points** from your PACE 5 grade.